

D

C

B

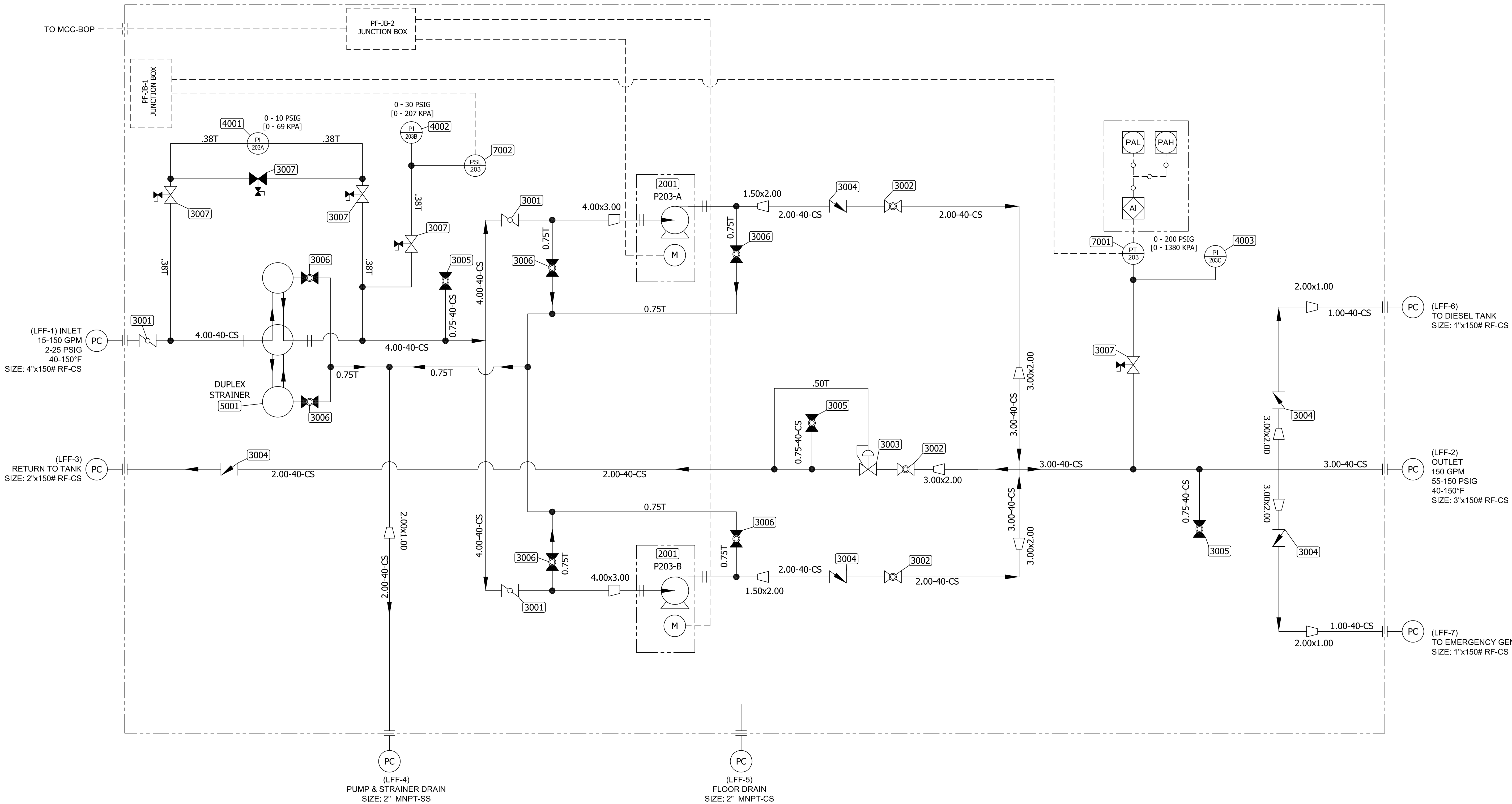
A

D

C

B

A




1	CHG DISC PIPE 4" TO 3"	S. Boerckel	02/15/2011	T. KOONTZ	B. MADDUX
0	ISSUED FOR FABRICATION	S. Boerckel	01/27/2011	T. KOONTZ	B. MADDUX
REV	DESCRIPTION	AUTHOR	DATE	CHECKED B	QA/QC
REVISION HISTORY					



© COPYRIGHT, 2009, PRO STEEL MANUFACTURING ALL RIGHTS RESERVED. THIS DRAWING IS THE PROPRIETARY AND/OR CONFIDENTIAL PROPERTY OF PRO STEEL MANUFACTURING AND IS LOANED IN STRICT CONFIDENCE WITH THE UNDERSTANDING THAT IT WILL NOT BE REPRODUCED NOR USED FOR ANY PURPOSE EXCEPT THAT FOR WHICH IT IS LOANED. IT SHALL BE IMMEDIATELY RETURNED ON DEMAND, AND IS SUBJECT TO ALL OTHER TERMS AND CONDITIONS OF ANY WRITTEN AGREEMENT OR PURCHASE ORDER WHICH INCORPORATES OR RELATES TO THIS DRAWING.

UNLESS OTHERWISE SPECIFIED
DIMENSIONS ARE IN INCHES
TOLERANCES ON
DECIMALS
X.X ± 0.10
X.XX ± 0.06
X.XXX ± 0.03
HOLE DIA ± 0.03
ANGLES ± 0.50°
SURFACE √ HFS-SF
SQUARENESS ± 0.06
DO NOT SCALE DRAWING

DRAWN S. Boerckel	01/27/2011
CHECKED T. KOONTZ	02/03/2011
QA B. MADDUX	02/03/2011
REVIEWER	
PROJECT NO 409-2956-1	
CUSTOMER EDC - MARGARITA ISLAND	
JOB NO	

			
2201 ProEnergy Blvd SEDALIA, MISSOURI 65301 USA PHONE: 1-660-828-1100 FAX: 1-660-828-1160			
TITLE P & ID SCHEMATIC UNIT NUMBERS 298034 & 298035 LIQUID FUEL FORWARDING SKID - 7EA			
SIZE D	ML:	DWG NO 409-2956-LFF7EA-0910-1	REV 1
SCALE: Not to Scale		SHEET 1	

PARTS LIST


PARTS LIST						
ITEM	TAG No	DEVICE	QTY	DESCRIPTION	CATALOG No	MANUFACTURER
2001	P1-A P1-B	PUMP MOTOR ASSEMBLY	2	MODEL 1K3X1.5-8RV DURCO MARK 3 PUMP (20HP) w/150# ANSI FF FLANGES (Type A BASE)	1K3x1.5-82RV M3 ST	FLOWSERVE
3001	LFFV-1A LFFV-1B LFFB-1C	BUTTERFLY VALVE - INLET BUTTERFLY VALVE - INLET (PUMP P203-A) BUTTERFLY VALVE - INLET (PUMP P203-B)	3	4" x 150# CS FS DYNACENTRIC HP BFV SERIES B5100, CLASS 150		COOPER CAMERON
3002	LFFV-2A LFFV-2B LFFV-2C	BALL VALVE - DISCHARGE (PUMP P203-A) BALL VALVE - DISCHARGE (PUMP P203-B) BALL VALVE - RETURN TO TANK	3	2" x 150# CS FS BALL VALVE - ANSI		
3003	LFFV-3	BACKP PRESSURE VALVE	1	2" x 150# CS FS BACKP PRESSURE VALVE - 63EG	2x63EG	FISHER
3004	LFFV-4A LFFV-4B LFFV-4C LFFV-4D LFFV-4E	CHECK VALVE - DISCHARGE (PUMP P203-A) CHECK VALVE - DISCHARGE (PUMP P203-B) CHECK VALVE - RETURN TO TANK CHECK VALVE - DISCHARGE (DEISEL TANK) CHECK VALVE - DISCHARGE (EMERGENCY GENERATOR)	5	2" DUO CHECK VALVE		
3005	LFFV-5A LFFV-5B LFFV-5C	BALL VALVE - VENT (INLET) BALL VALVE - VENT (DISCHARGE) BALL VALVE - VENT (RETURN TO TANK)	3	3/4" FNPT FS BALL VALVE	SS-A65TF12	SWAGELOK
3006	LFFV-6A LFFV-6B LFFV-6C LFFV-6D LFFV-6E LFFV-6F	BALL VALVE - INLET DRAIN (PUMP P203-A) BALL VALVE - INLET DRAIN (PUMP P203-B) BALL VALVE - DISCHARGE DRAIN (PUMP P203-A) BALL VALVE - DISCHARGE DRAIN (PUMP P203-B) BALL VALVE - DRAIN (STRAINER) BALL VALVE - DRAIN (STRAINER)	4	3/4" FS SS SWAGE BALL VALVE	SS-A65TS12	SWAGELOK
3007	LFFV-7A LFFV-7B LFFV-7C LFFV-7D LFFV-7E	GAGE VALVE - INLET PRESSURE GAGE VALVE - DISCHARGE PRESSURE GAGE VALVE - PRESSURE DIFFERENTIAL UP STREAM GAGE VALVE - PRESSURE DIFFERENTIAL DOWN STREAM GAGE VALVE - PRESSURE DIFFERENTIAL EQUALIZER	5	1/4" FNPT GAGE VALVE w/ STEM TEST		DRAGON
4001	PI-203A	DIFFERENTIAL PRESSURE GAGE	1	4.5" GAGE FLUSH MOUNT BACK CONN. 1/4" MNPT 0-10 PSIG		MID-WEST
4002	PI-203B	SUCTION PRESSURE GAGE	1	4.5" GAGE FLUSH MOUNT LOWER CONN. 1/4" MNPT 0-30 PSIG	7112-G030	DWYER
4003	PI-203C	DISCHARGE PRESSURE GAGE	1	4.5" GAGE FLUSH MOUNT LOWER CONN. 1/4" MNPT 0-200 PSIG	7112-G200	DWYER
5001	LFFF-1	DUPLEX STRAINER	1	DUPLEX STRAINER CAST IRON w/4" x 150# FLANGED CONN. (1/16" PERF. BASKETS)		
7001	PT-203	PRESSURE TRANSMITTER	1	ROSEMOUNT 3051 SERIES PT 0-200 PSIG	3051TG2A2A21AB4C6	ROSEMOUNT
7002	PSL-203	PRESSURE SWITCH LOW	1	PRESSURE & VACUUM SWITCH 40-0-40 IN WC	52NN-K117-M1-B2A-TT	SOR

1	CHG DISC PIPE 4" TO 3"	S. Boerckel	02/15/2011	T. KOONTZ	B. MADDUX
0	ISSUED FOR FABRICATION	S. Boerckel	01/27/2011	T. KOONTZ	B. MADDUX
REV	DESCRIPTION	AUTHOR	DATE	CHECKED B	QA/QC
REVISION HISTORY					



© COPYRIGHT, 2009, PRO STEEL
MANUFACTURING ALL RIGHTS RESERVED.
THIS DRAWING IS THE PROPRIETARY
AND/OR CONFIDENTIAL PROPERTY OF
PRO STEEL MANUFACTURING AND IS
LOANED IN STRICT CONFIDENCE WITH
THE UNDERSTANDING THAT IT
WILL NOT BE REPRODUCED NOR USED
FOR ANY PURPOSE EXCEPT THAT FOR WHICH
IT IS LOANED. IT SHALL BE IMMEDIATELY
RETURNED ON DEMAND, AND IS SUBJECT TO
ALL OTHER TERMS AND CONDITIONS OF ANY
WRITTEN AGREEMENT OR PURCHASE ORDER WHICH
INCORPORATES OR RELATES TO THIS DRAWING.

UNLESS OTHERWISE SPECIFIED	
DIMENSIONS ARE IN INCHES	
TOLERANCES ON	
DECIMALS	
X.X	± 0.10
X.XX	± 0.06
X.XXX	± 0.03
HOLE DIA	± 0.03
ANGLES	± 0.50°
SURFACE	✓ <u>HFS-SF</u>
SQUARENESS	± 0.06
DO NOT SCALE DRAWING	

DRAWN S. Boerckel	01/27/2011	 <div>2201 ProEnergy Blvd SECUNIA, MISSOURI 63081 USA PHONE: 1-800-928-4100 FAX: 1-800-928-1180</div>				
CHECKED T. KOONTZ	02/03/2011	TITLE P & ID SCHEMATIC UNIT NUMBERS 298034 & 298035 LIQUID FUEL FORWARDING SKID - 7EA				
QA B. MADDUX	02/03/2011					
REVIEWER						
PROJECT NO 409-2956-1		SIZE	ML:	DWG NO	REV	
CUSTOMER EDC - MARGARITA ISLAND		D		409-2956-LFF7EA-0910-2	1	
JOB NO		SCALE: None WEIGHT:			SHEET 2	